



ALL MEDI SOLUTIONS™
SOLUTIONS FOR ALL HOSPITALS



SERVICES

YOU CAN TRUST



ABOUT US

As a pioneer in the field, All Medi Solutions constantly pursues technological innovations to offer superior clinical benefits at a lower cost. At All Medi Solutions, quality healthcare is considered as a fundamental right and the vision is to make it available for the people of all classes.

A quickly developing of entrepreneurs with a watch on excellence set out to make their very own destiny. All Medi Solutions wants to be one of the most respected and inspiring company in this field.

“All Medi Solutions” brings the products which meets the highest requirements with regard to Hygienic, Ergonomics and are well respected because of the durability and price / quality compare.

VISION

Our Vision is to caring, quality, safety, service, innovation and excellence to be your trusted health care partner.

MISSION

Our Mission is to increase Customer Satisfactions & Improving people's lives with our health care products.

CORE VALUE

To Create Feature, Safety, Innovation Creativity, transparency with Strong Team Work



OT WALL PANELS

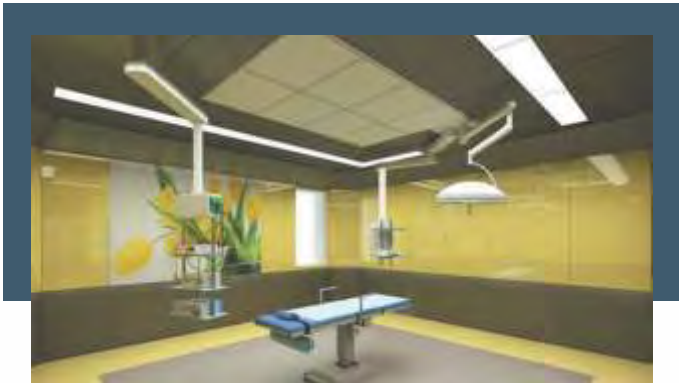
AMS walls can always be customized to meet every need & sets standards in terms of functionality and flexibility, aesthetics and quality.



CORIAN WALL PANELS



SS 304 WALL PANELS



GRAPHIC GLASS PANEL



GI / PPGI WALL PANELS WITH ANTIMICROBIAL / ANTIBACTERIAL COATING



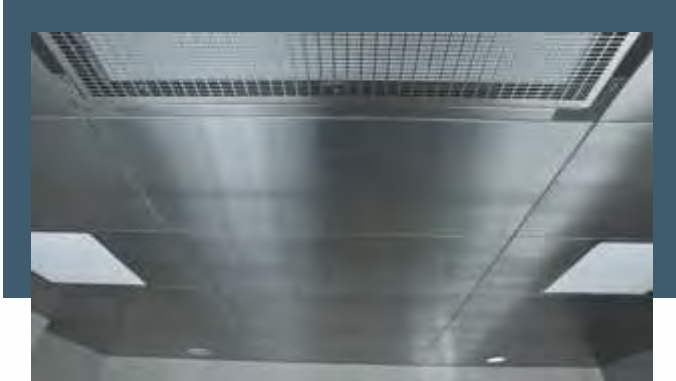
HPL WALL CLADDING



VINYL WALL COVERING

OT CEILING PANELS

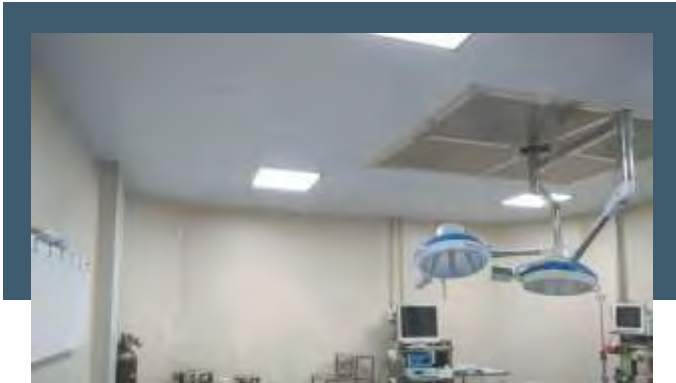
AMS Ceiling Panels can always be customized to meet every need & sets standards in terms of functionality and flexibility, aesthetics and quality.



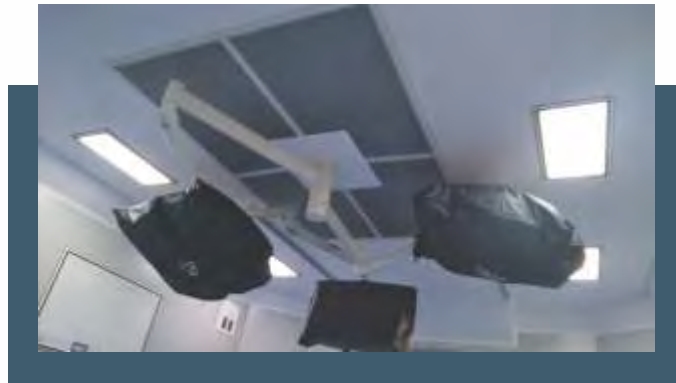
SS 304 CEILING PANEL



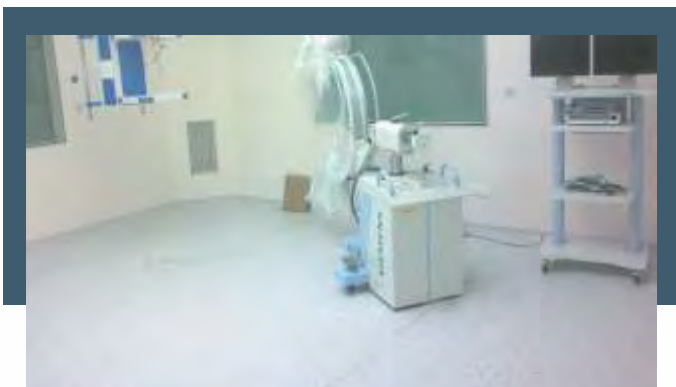
GI/PPGI CEILING PANEL



METALIC CEILING



CALCIUM SILICATE CEILING PANEL



CONDUCTIVE FLOORING

- ❖ Electrostatic Conductive Vinyl
- ❖ High Resistance against Chemical & Mechanical Strains
- ❖ Wide range of Colours



NON-CONDUCTIVE

- ❖ High Resistance against Chemical & Mechanical Strains
- ❖ Easy to Install , Repair, Clean
- ❖ Wide range of Colours

OT FIXTURES



SURGICAL CONTROL PANEL

- ❖ Time Elapse Clock, Control for Lights , HVAC
- ❖ Gas Alarm, Music System, Telephone



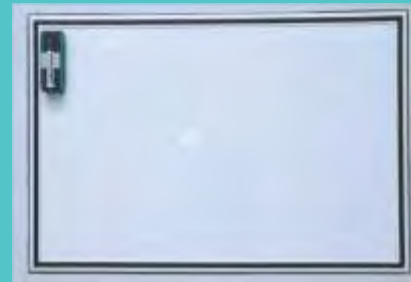
LED PHERIPHERAL LIGHT

- ❖ Standard Size 2 ft x 1 ft
- ❖ IP 65 Grade
- ❖ Excellent Luminous Intensity



LED X-RAY VIEWER

- ❖ Twin Plate X-Ray Viewing Screen
- ❖ Control Luminance without Flicker



WRITING OR LIST BOARD

- ❖ Acrylic Board
- ❖ With Magnetic Properties



PRESSURE RELIEF DAMPER (PRD)

- ❖ Multiple Bladed Unit (SS-304)
- ❖ Balancing Carried Out Using Balanced Weight
- ❖ Working Range of 5-35Pa



HATCH OR PASS BOX

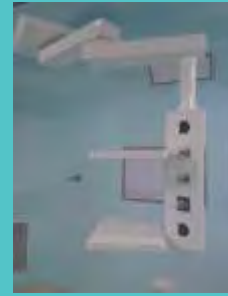
- ❖ Stainless Steel -304
- ❖ Double Skin with coving Inside
- ❖ With Ultraviolet Light (UV)

PENDANTS, OT (LIGHT & TABLE)



SINGLE ARM PENDANT (ANESTHESIA)

- ❖ Providing all Medical Gases & Electrical Services
- ❖ Facilitating Equipment Management for the Anesthetists



DOUBLE ARM PENDANT (SURGEON)

- ❖ Providing all Medical Gases & Electrical Services
- ❖ Pendant are designed to load surgical instruments
- ❖ Facilitating Equipment Management for the Anesthetists



OT LIGHT

- ❖ It is used in high demanding Surgical Procedures
- ❖ To Ensure Low Energy Consumption and Long Service Life



OT TABLE

- ❖ For Wobble Free & High Stability during Operation
- ❖ Extensive use of SS-304 for Rust Free Long Life

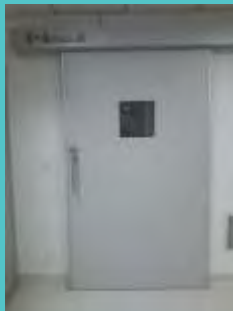


STERILE CORRIDOR



ICU

DOORS, SCRUB & STORAGE



HERMETICALLY SEALED SLIDING DOOR

- ❖ Manual as Standard Unit
- ❖ Automation Option with Radar Switch Foot Switch And Photo Cell Sensor



HPL MANUAL SWING DOOR

- ❖ Manual as Standard Unit with Door Closer
- ❖ Available in Single Leaf & Double Leaf



STORAGE UNIT

- ❖ Provides Customized Built-in Storage Cabinets
- ❖ It can store Sterile Items & Necessary Medicines



VIEW WINDOW

- ❖ Consisting of Double Insulated fixed Glazing with not less than 5mm Thick Toughened Glass



2-BAY SCRUB SINK (SS-304)

- ❖ Surgical Scrub Sinks are easy to maintain and Durable
- ❖ Scrub Sinks are available with One, Two, or Three Stations



2-BAY SCRUB SINK (CORIAN)

- ❖ Surgical Scrub Sinks are easy to maintain and Durable
- ❖ Scrub Sinks are available with Two, or Three Stations

HVAC SYSTEM



LAMINAR AIR FLOW SYSTEM

- ❖ To create a controlled sterile working area
- ❖ Free of bacterial contamination with positive air pressure, HEPA filters 0.3 microns



RETURN AIR RISER

- ❖ Aluminium Material 20 Gauges without Sharp Edge
- ❖ Each Return Air Riser Grills with 10 Micron Filters
- ❖ Aluminium powder coated Grill of Return Air Riser



AIR HANDLING UNIT (AHU)

- ❖ We offer precision engineered Air Handling Units in various designs and capacities
- ❖ Double Skinned Available in PPGI / SS-304



DUCTING

- ❖ Aluminium Material 18-20 Gauges without Sharp Edge
- ❖ Gasket of 3mm between the Joints
- ❖ Leakless Ducting with Proper Insulation



OUTDOOR UNIT (ODU)

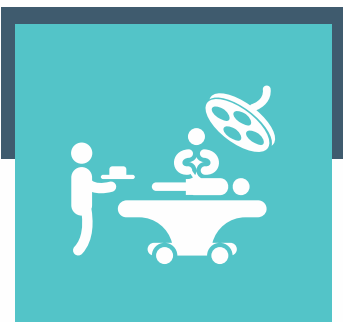
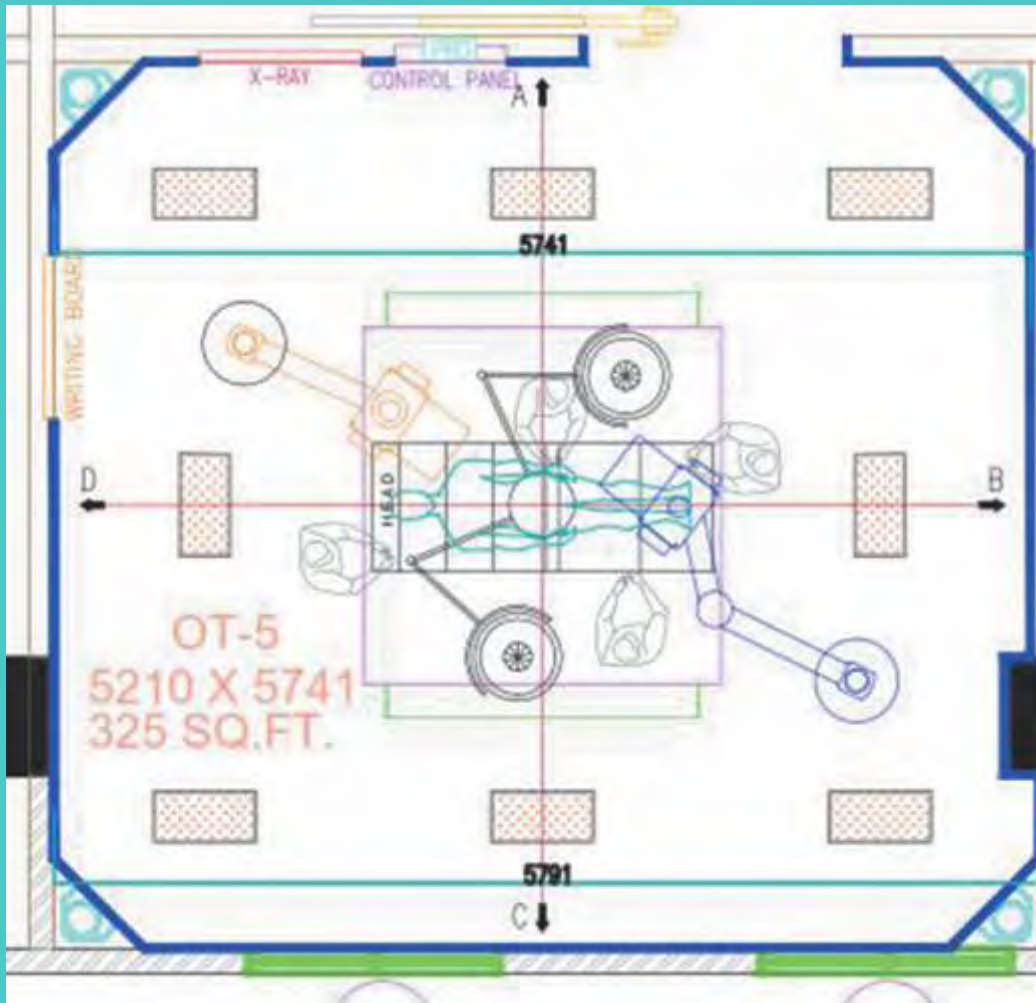
- ❖ Condenser shall be Air Cooled type
- ❖ Tubing will be copper
- ❖ Tubing Coated with Corrosion Resistant Coating



AHU CONTROL PANEL

- ❖ 3 Phase AHU DB
- ❖ Automatic Switching & Controlling
- ❖ With all safety Measures

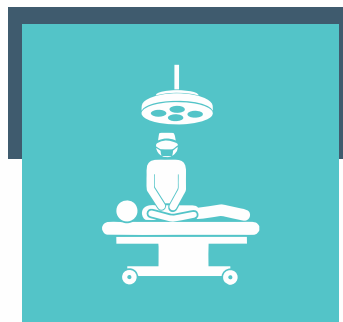
MODULAR OT FLOOR PLAN IN AUTO CAD



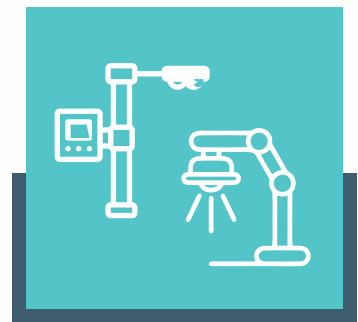
MODULAR OT



HVAC



**OT TABLE &
OT DOME LIGHT**



**OT
EQUIPMENTS**

The successful planning and design of an operating theatre may take time Especially if it incorporates technologies. But the time taken in the short term will pay dividends in the long term with a space that works for staff and patients now and into the future.



ALL MEDI SOLUTIONS™
SOLUTIONS FOR ALL HOSPITALS



THANK YOU

OFFICE ADD:

B-808, Dr. Babasaheb Ambedkar Nagar, S.B. Marg,
Behind Kamgar Stadium,
Elphinstone, Mumbai - 400013.

+91-976-8420-207 | +91-842-590-3838

info@allmedisolutions.in | www.allmedisolutions.in

www.allmedisolutions.in